

SRB

Stoni nosač za monitor MH311D

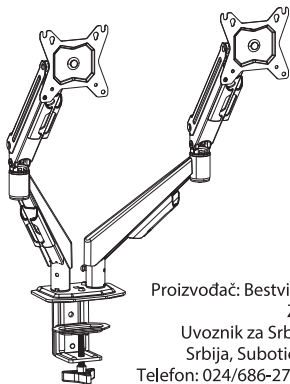
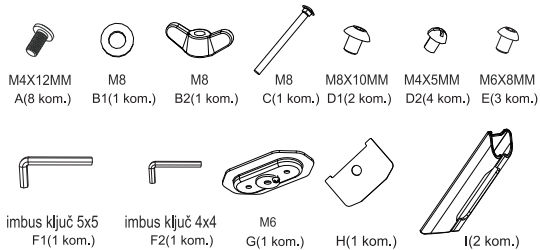
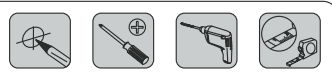
Uputstvo za upotrebu

PROSTO

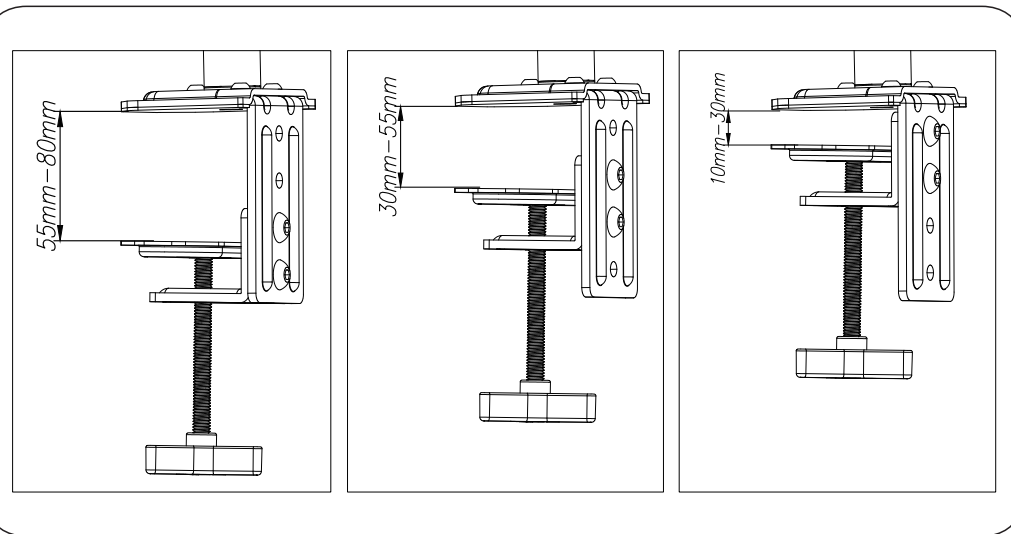
100x100

Max
2-8kg

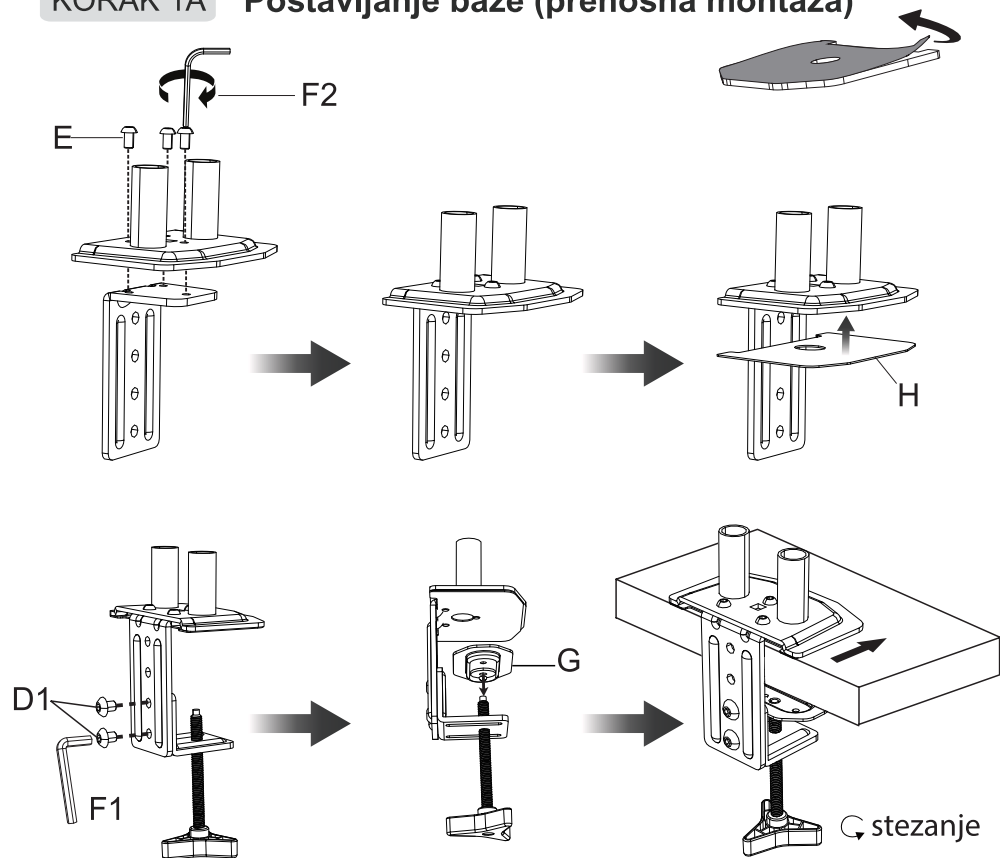
17"-32"



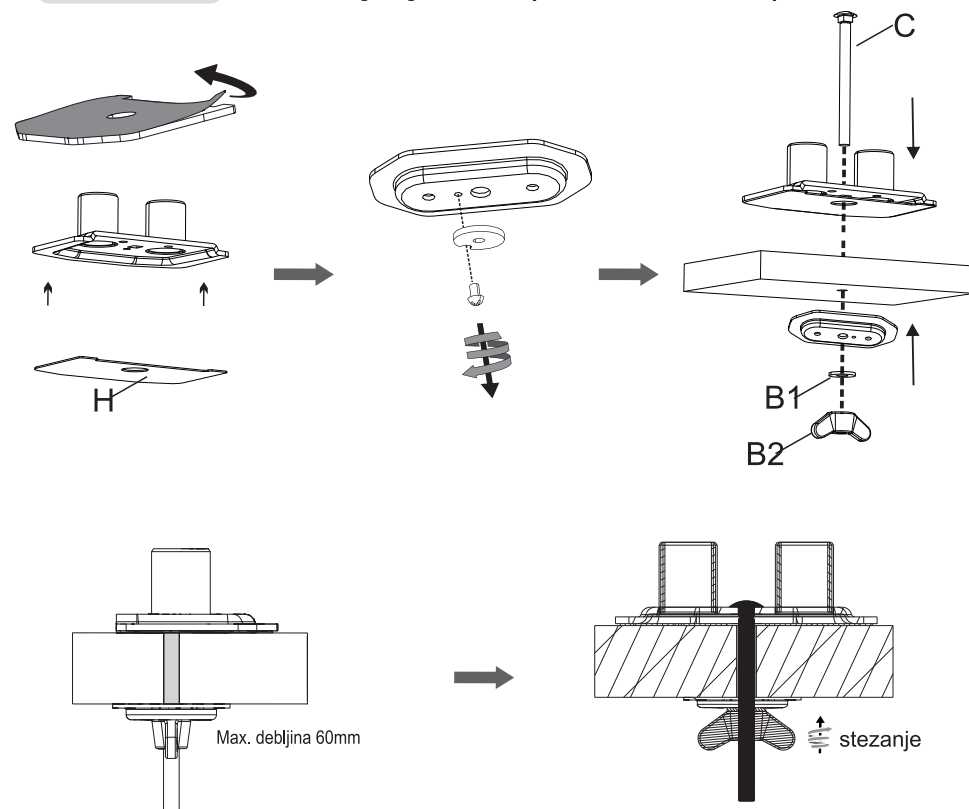
Oznaka: MH311D
 Proizvođač: Bestview Industry Limited
 Zemlja porekla: Kina
 Uvoznik za Srbiju: Elementa d.o.o.,
 Srbija, Subotica, Jovana Mikića 56
 Telefon: 024/686-270, www.elementa.rs



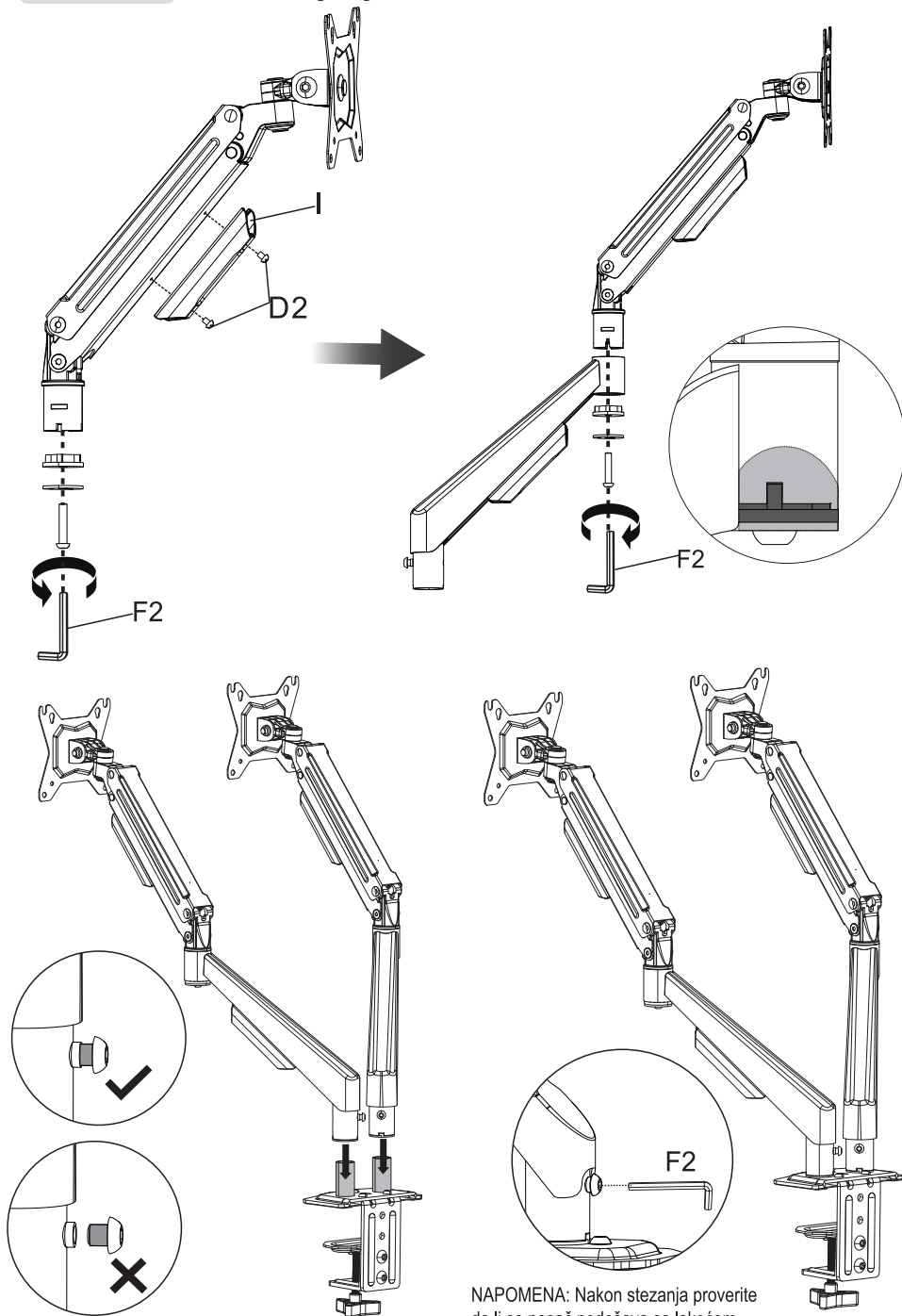
KORAK 1A Postavljanje baze (prenosna montaža)



KORAK 1B Postavljanje baze (fiksna montaža)

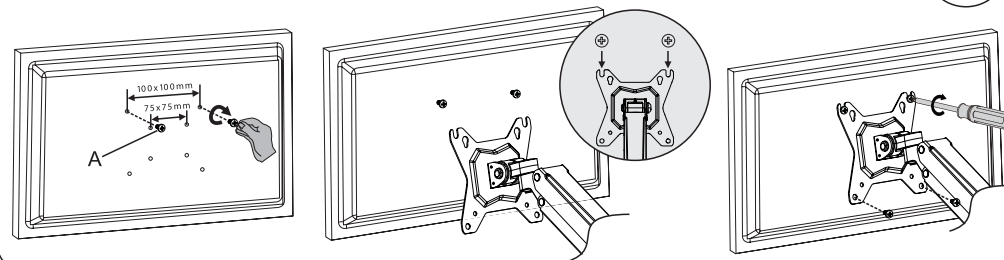


KORAK 2 Postavljanje „ruke“ na bazu



NAPOMENA: Nakon stezanja proverite da li se nosač podešava sa lakoćom.

KORAK 3 Postavljanje monitora na nosač



KORAK 4

Podešavanje zategnutost opruge Podešavanje ugla monitora i fiksiranje kablova

